

Silk Painting

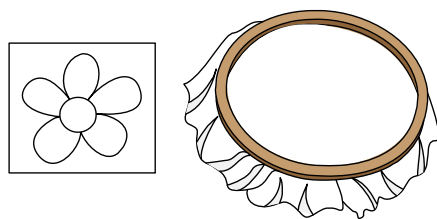
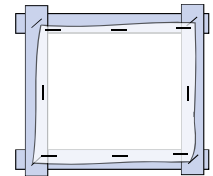
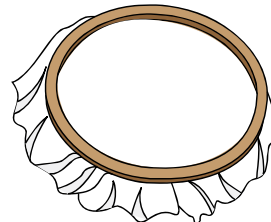
Embroidery ring or strips of card
Stapler
Silk material
Silk paint

Gutta
Paintbrush
Iron

Cut a piece of silk the size required.

Stretch the silk by using either an embroidery ring or use strips of card made into a frame.

If using the card, then staple the silk all the way around the card frame.



Either draw your design onto the silk with a pencil or use a template.

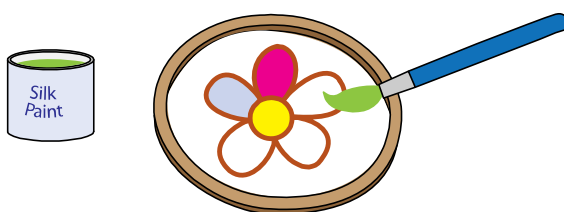
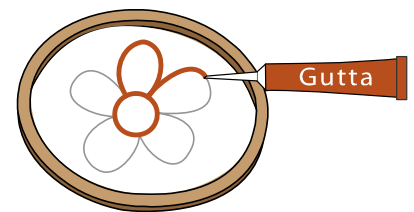
Print your design onto paper and place underneath the silk so that the design can be seen through the silk.

Hold the gutta vertically with the tip touching the silk.

Using even pressure and a steady hand, draw the lines.

Be sure there are no breaks or gaps in the lines, or dye will escape.

Also check the back of the silk to make sure the gutta has penetrated all the way through.



Dip the brush into the paint and apply sparingly to the centre of an outlined area by touching the brush to the silk.

Let the paint move to the lines – do not apply the paint too close to the lines.

When painting large areas such as backgrounds, work quickly, applying wet to wet to avoid unwanted lines.

Setting paints with heat

Allow to dry 24 hours before heat-setting the paints with an iron.

Iron each area of your piece for 2-3 minutes, face down on your ironing board with a press cloth between the silk and iron.

Work in small areas at a time, moving in a small circular motion so as not to burn the silk, but also so that each section retains the heat for a long enough duration to actually set the paint.

