

# Ceramic Painting

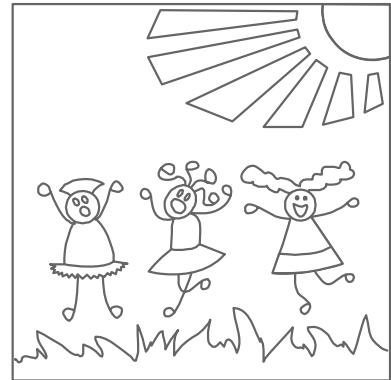
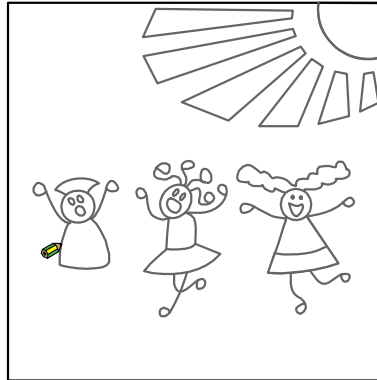
1 ceramic tile

Pencil

Ceramic colour pens

Use a ceramic tile.

Using a pencil draw your design onto the tile.



Now use the ceramic colour pens to go over your design and colour in.

Set the tile to one side and allow it to dry thoroughly.

Different pens may have different instructions for drying and setting. Follow the instructions for your pens.

The instructions shown here give an indication as to how long drying and baking may take.

If you are doing this activity with a group of people who will make and take away, give out the instructions with each tile.

## **Ceramic Painting – To set the paint on the tiles**

Allow 4 hours for the pens to dry.

Place the tile in a cold oven.

Turn oven on to warm/moderate/160°C/325°F/Gas mark 3.

Heat for 90 minutes.

Allow to cool in the oven.