

# Elephant Box

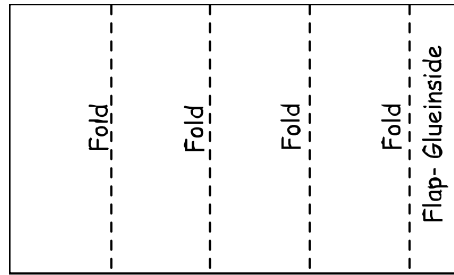
## Materials

A4 Card  
Scissors

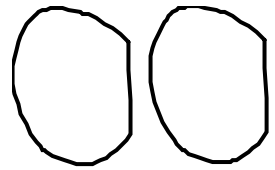
Pencils  
Pritt Stick

- 1 Draw around the template for the box.

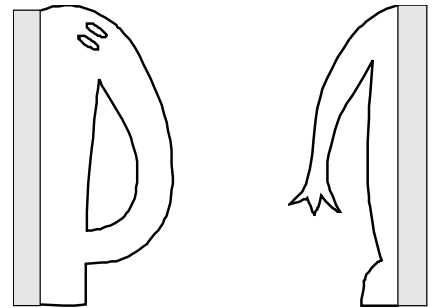
Fold as directed and glue.



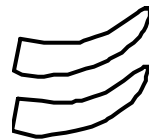
- 2 Draw around the ears and cut out two.



- 3 Draw around the head and the tail and cut out.



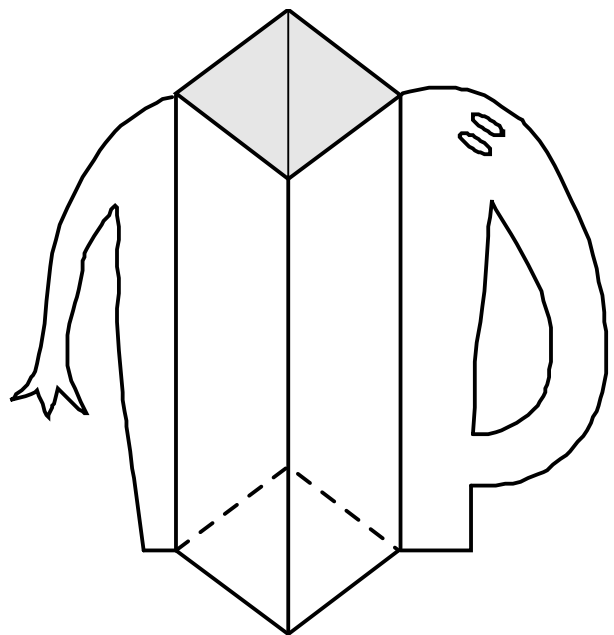
- 4 Draw around the two tusks and cut out.

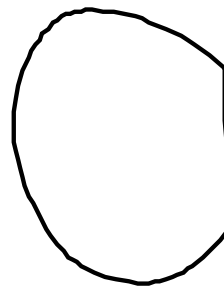
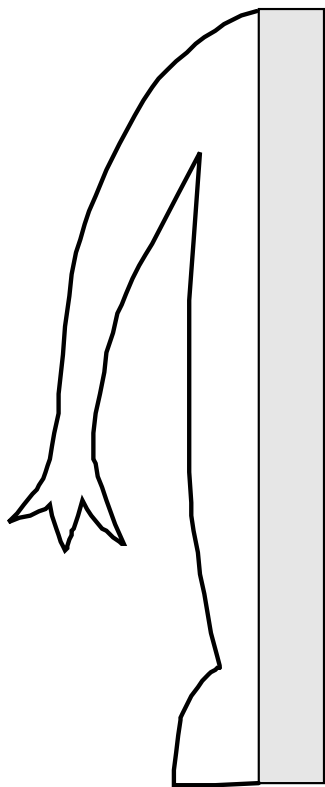


- 5 Glue the head and the tail in place.

Let the glue dry.

Stand as a square and use for pencils.





Fold

Fold

Fold

Fold

Flap- Glueinside